

Utilities Safety

The utilities industry includes a wide range of businesses—such as gas, water and power companies—that supply essential services to residential, commercial and public sectors.

Working in the utilities industry often involves long hours, operating heavy machinery and handling potentially dangerous equipment. It's important to ensure that your employees are utilizing proper safety equipment at all times to reduce the risk of injury in your facility. One of the best ways employers can reduce accidents is by creating a safe working environment that complies with Occupational Safety and Health Administration (OSHA) standards. Trip and fall accidents are among the leading causes of injuries across all industries, and OSHA emphasizes providing the right equipment as part of their three-pronged approach to reducing accidents.



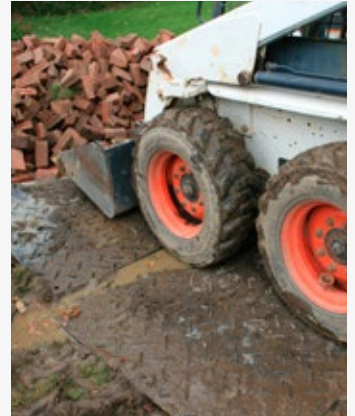
Wheel Chocks

Wheel chocks are designed to secure heavy vehicles and equipment when they are at rest. Wheel chocks from Checkers feature an all-weather polyurethane construction that is resistant to tears, oils and solvents. For workers in the utilities industry, these chocks can help secure maintenance vehicles or other machinery and reduce the risk of unintended movement.



Ground Stabilization Matting

Ground stabilization and protection matting are essential when service vehicles have to traverse unstable or sensitive terrain in order to make repairs or complete jobs. These mats from Checkers help vehicles cross over lawns or other agricultural areas without damaging them. They also provide personnel with a stable working platform that helps prevent vehicles from tipping or sliding.



Cable Protector

Utility facilities often utilize cables and hoses that supply water or electricity. If left unsecured, these cables and hoses represent a potential tripping hazard for personnel. Cable protectors will safely house cables and hoses in order to provide safe crossing for staff and vehicles.



Warning Whips

Utility facilities often utilize cables and hoses that supply water or electricity. If left unsecured, these cables and hoses represent a potential tripping hazard for personnel. Cable protectors will safely house cables and hoses in order to provide safe crossing for staff and vehicles.

