

MOTION SAFETY SOLUTIONS FOR JOB SITE APPLICATIONS

Unrivaled Safety and Protection

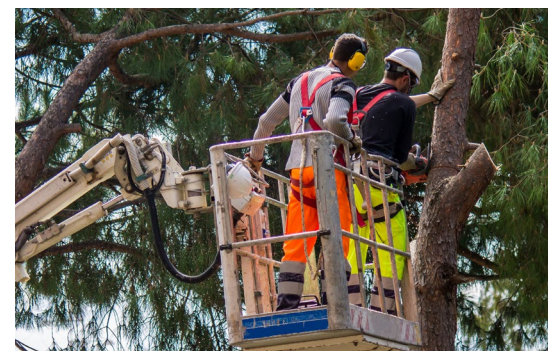
The most trusted name in ergonomic, high-visibility safety products. Rigorously tested and hand-inspected for your peace of mind.

Unparalleled Durability and Longevity

Designed to last longer than any other safety product on the market, thanks to our commitment in using the best processes and high-quality products that are built to deliver the performance you need, every time.

Unmatched Expertise and Support

Intimate knowledge of application requirements and a broad product portfolio, makes Checkers the go-to-choice for professionals around the world.



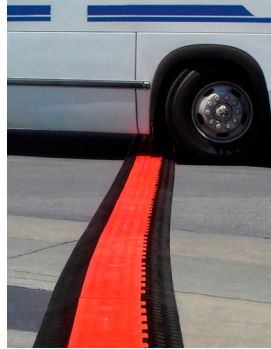
CABLE & HOSE PROTECTION

- Most extensive line of high-performance cable/hose protection products in the world.
- Durable systems that provide a safer method of passage for pedestrian traffic, vehicles and heavy-duty equipment
- Protect valuable electrical cables, cords and hose lines from damage.



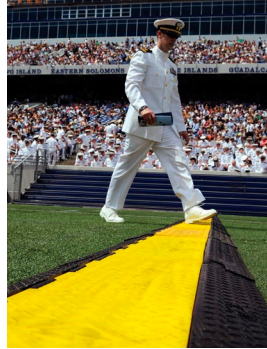
Light Duty

Ideal for: Office, Light Industrial, Entertainment
(Up to 2,100lbs/Axle)



Guard Dog®

Ideal for: Utility, Industrial, Entertainment
(Up to 28,400lbs/Axle)



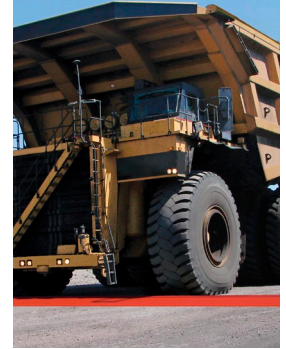
Yellow Jacket®

Ideal for: Entertainment, Manufacturing, Material Handling
(Up to 35,600lbs/Axle)



Linebacker®

Ideal for: Oil, Gas, Mining, Military, Construction, Heavy-Duty Applications
(Up to 40,300lbs/Axle)



Extreme Heavy Duty

Ideal for: Extreme Heavy Industrial, Mining
(Extreme Crossover up to 400,000lbs/tire)

Increases jobsite **setup/teardown productivity**, provides highest **durability**, and maximizes **the protection of people and assets**.

WHEEL CHOCKS

- Comply with the safety requirements of a variety of industries, ensuring a safe working environment while your vehicles are at rest.
- Field and laboratory tested by experts under various conditions to prove our products prevent nonmotorized, uncontrolled movement of on and off-road vehicles.
- Offered in a variety of styles to safely secure any type of vehicle and meet compliance standards.



Heavy Duty Wheel Chocks

Ideal for: Heavy Equipment, Haul Trucks, Loaders, Cranes, Underground Mining Vehicles, Fire Engines/Trucks, Military Vehicles
(GVOW: 30,000lbs - 1,600,000lbs Tire Diameter: 32" - 165", NFPA 1901 1906 1911, SAE-J348)



General Purpose Wheel Chocks

Ideal for: Over The Road Trucks, Trailers, Pickups, And Utility Vehicles
(GVOW: 30,000lbs - 245,000lbs Tire Diameter: 32" - 65")



Aviation Wheel Chocks

Ideal for: Private, Commercial, Cargo And Military Aircraft.
(Mil-Spec MIL-PRF-32058-2017, SAE AIR4950, IATA Compliant)

Trusted **vehicle stabilization**, superior **ergonomics** and increased **visibility**.

GROUND PROTECTION

- Deliver safe and robust temporary access, roadways or working platforms for construction vehicles and site personnel.
- Prevent property/equipment damage & productivity loss from ground subsidence or surface damage.
- Easiest to deploy; interconnect to form secure tracks/platforms.



Ground Protection Matting

Ideal for: Construction, Landscaping,
Oil And Gas, Utilities, Civil Engineering

(Medium Duty: Up to 120T
Heavy Duty: Up to 165T)



Outrigger Crane Pads

Ideal for: Vehicles And Cranes
(Up to 70T weight bearing capacity)



GeoGrid Cellular Paving System

Ideal for: Car Parks, Access Routes,
Gateway Or Entrance Areas,
Equestrian Areas, Private Driveways

(Up to 25T point load)

Unrivaled **durability**, maximum **traction**, most efficient and effective **handling**.

VISUAL SAFETY

- Highest level of visibility and reliability in any weather or working condition.
- Designed with safety managers and industry experts.
- Durable construction built with heavy duty materials to withstand harshest weather conditions and demanding environments.



Warning Whips

Ideal for: Oil, Gas, Mining, Construction,
Heavy-Duty, and Aviation Applications

(Available in 3, 5, 6, 8, 10, & 12 ft lengths)



Large Vehicle Identification Lights

Ideal for: Mining, Construction and Other
Industrial Applications

(Customizable Reflective ID Numbers)

Highest **visibility**, unmatched **reliability** and most **rugged** solutions.

TRAFFIC & PARKING SAFETY

- Improves safety by reducing the risk of accidents in car parks, garages, alleyways and bike lanes.
- Lower total cost of ownership and reduced cost of replacement vs. traditional asphalt/concrete.
- Easy to install/remove to replace existing product and permit vehicle access.



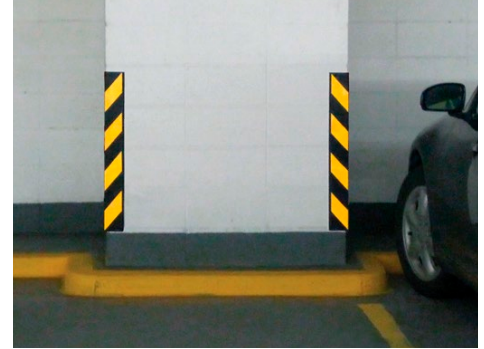
Parking Stops

Ideal for: Bringing a vehicle to a safe stop within a parking stall
(3ft to 8ft lengths)



Speed Bumps & Humps

Ideal for: School, Hospital Zones, Parking Lots, Alleyways or Anywhere that Traffic Speeds Must Be Reduced
(4ft to 9ft lengths)



Bollards, Wall & Corner Guards

Ideal for: Surface and Multi-level Parking Lots, Interior Factory, Warehouse Walls, and Areas Surrounding Loading Docks.
(MUTCD Compliant)

Reduces overall construction cost, environmentally sustainable and longest lasting.

In 2018, Checkers™ became a portfolio company of Justrite Safety Group®

For more than a century, Justrite has kept workers safe. We're trusted experts dedicated to protecting where the world works, ensuring every customer achieves compliance to regulations, and follows best practices for a safe and productive workplace.

Justrite Safety Group is a growing family of leading industrial safety companies. We are united by deep safety knowledge, long experience, and a commitment to protecting people, property and the planet.

Visit us at checkers.justrite.com for more information.



(800) 798-9250 • custserv@justrite.com • [Checkers-Safety.com](https://checkers-safety.com)

© 2024 Justrite Safety Group • Code L-CK238 (0624)